



TRAXON Go⁺

Ribbon Go 5 FL



Project: _____

Type: _____

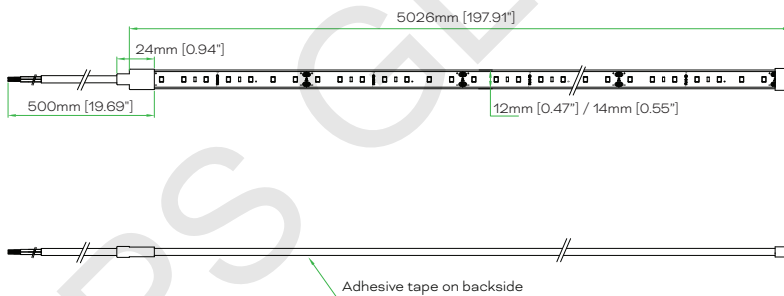
IP66

The Ribbon Go 5 FL family are flexible LED ribbons, which are reliable and multi-optional with comprehensive features, available in outdoor IP66 version, making them the perfect solution for a variety of applications, including linear, flexible, creative ambient projects, curved lighting and free-form applications.

Features

- Up to 2700 lm/m
- Ra80/90, 3 SDCM
- White, Dynamic White, RGB, RGBW options
- Power range from 2W to 20W
- ON/OFF, DALI, PWM, 0-10V, 1-10V, DMX2PWM Dimmer, Radio Frequency (Dimming is possible with optional accessories)
- IP66
- Lumen Maintenance L70@25° - 50,000 Hours

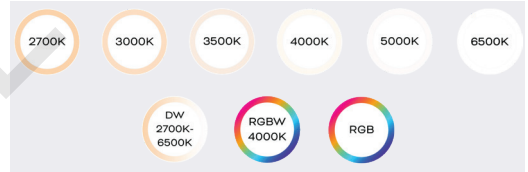
Dimensions



Technologies

- ON/OFF, DALI, PWM, 0-10V, 1-10V, DMX2PWM Dimmer, Radio Frequency

Color Options



Beam Angle





Product Specifications - Ribbon Go 5 FL W 70LEDs/m

Model	FL 2W	FL 7.1W	FL 13.5W
Light Source	White LED		
Color Range	White 2700K, 3000K, 3500K, 4000K, 5000K, 6500K		
CRI	Ra80, Ra90		
LED Quantity per Meter	70PCS		
Cutting Pitch	100mm		
Luminous Flux per Meter @4000K, Ra80	286 lm	950 lm	1878 lm
Efficacy @4000K, Ra80	143 lm/W	133 lm/W	139 lm/W
SDCM	≤ 3		
Beam Angles	120°		
Housing	Silicon Extrusion		
Mounting	Adhesive tape on Ribbon Various mounting channels or mounting clips		
Dimensions (L)	5026mm / 197.91"		
Dimensions (W x H)	12mm x 4.5mm / 0.47" x 0.18"		
Reel Length	5m		
Maximum Daisy Chain	10m	10m	6m
Weight per Meter	70g / 2.47oz		
Minimum Bend Radius	30mm / 1.18"		
Regulatory Listing & Safety Approval	Electrical Protection Class III		
Operating Temperature	-25°C to +50°C (-13°F to +122°F)		
Storage Temperature	-35°C to +60°C (-31°F to +140°F)		
Environment	Outdoor, IP66		

Electrical Specifications

Input Voltage	24V DC Constant Voltage		
Power Consumption per Meter	2W	7.1W	13.5W
Lumen Maintenance	L70 50,000hrs @ 25°C		

System Specifications

Power Supply	Power Supply 24V
Control	ON/OFF, DALI, PWM, 0-10V, 1-10V, DMX2PWM Dimmer, Radio Frequency (Dimming is only possible with optional accessories)

Accessories

Mounting Accessories	Optional
----------------------	----------

LED CHARACTERISTICS Because LEDs are semiconductor devices, their performances are subject to inherent variability commonly found in semiconductor industry. To improve consistency in performance across the same product, LED manufacturers "sort" LEDs into bins according to different preset parameters, such as forward driving voltage, illumination, etc. Whereas binning is a sorting function, it is not a correction process. Inherent variability in the manufacturing process results always in different binning distributions according to different production lots. Traxon uses automatically binned LEDs on its products, thereby minimizing output variations within the model range.

As with all electronic devices, LED output degrades over time – a term called lumen depreciation. This also explains why it is nearly impossible to expect photometric performances of two LED products with different service life spans to be the same. The rate of LED degrade is a complicate function of many factors such as operating efficiency, duration of continuous operation, and more significantly, environmental conditions (ambient temperature for example). If allowed working under optimal operating temperature range and with good ventilation, LED devices enjoy long service lives over conventional light sources. When using/installing LED devices, care should be taken to ensure that the devices will operate within the operating conditions specified in respective product literature.

Lumen measurement complies with LM-79-08 standard.
Lumen maintenance is calculated based on LM-80 compliant measurement.



Product Specifications - Ribbon Go 5 FL W 140LEDs/m

Model	FL 4W	FL 6.8W	FL 10.5W	FL 14.6W	FL 20W
Light Source	White LED				
Color Range	White 2700K, 3000K, 3500K, 4000K, 5000K, 6500K				
CRI	Ra80, Ra90				
LED Quantity per Meter	140PCS				
Cutting Pitch	50mm				
Luminous Flux per Meter @4000K, Ra80	568 lm	938 lm	1394 lm	1869 lm	2700 lm
Efficacy @4000K, Ra80	142 lm/W	138 lm/W	133 lm/W	128 lm/W	135 lm/W
SDCM	≤ 3				
Beam Angles	120°				
Housing	Silicon Extrusion				
Mounting	Adhesive tape on Ribbon Various mounting channels or mounting clips				
Dimensions (L)	5026mm / 197.91"				
Dimensions (W x H)	12mm x 4.5mm 0.47" x 0.18"				14mm x 4.5mm 0.55" x 0.18"
Reel Length	5m				
Maximum Daisy Chain	10m	10m	8m	6m	5m
Weight per Meter	72g / 2.54oz				82g / 2.89oz
Minimum Bend Radius	30mm / 1.18"				
Regulatory Listing & Safety Approval	Electrical Protection Class III				
Operating Temperature	-25°C to +50°C (-13°F to +122°F)				
Storage Temperature	-35°C to +60°C (-31°F to +140°F)				
Environment	Outdoor, IP66				

Electrical Specifications

Input Voltage	24V DC Constant Voltage				
Power Consumption per Meter	4W	6.8W	10.5W	14.6W	20W
Lumen Maintenance	L70 50,000hrs @ 25°C				

System Specifications

Power Supply	Power Supply 24V				
Control	ON/OFF, DALI, PWM, 0-10V, 1-10V, DMX2PWM Dimmer, Radio Frequency (Dimming is only possible with optional accessories)				

Accessories

Mounting Accessories	Optional	The fixtures must be used with U-channel or PL (See "Mounting Accessories Dimensions" on page 10)
----------------------	----------	---

LED CHARACTERISTICS Because LEDs are semiconductor devices, their performances are subject to inherent variability commonly found in semiconductor industry. To improve consistency in performance across the same product, LED manufacturers "sort" LEDs into bins according to different preset parameters, such as forward driving voltage, illumination, etc. Whereas binning is a sorting function, it is not a correction process. Inherent variability in the manufacturing process results always in different binning distributions according to different production lots. Traxon uses automatically binned LEDs on its products, thereby minimizing output variations within the model range.

As with all electronic devices, LED output degrades over time - a term called lumen depreciation. This also explains why it is nearly impossible to expect photometric performances of two LED products with different service life spans to be the same. The rate of LED degrade is a complicate function of many factors such as operating efficiency, duration of continuous operation, and more significantly, environmental conditions (ambient temperature for example). If allowed working under optimal operating temperature range and with good ventilation, LED devices enjoy long service lives over conventional light sources. When using/installing LED devices, care should be taken to ensure that the devices will operate within the operating conditions specified in respective product literature.

Lumen measurement complies with LM-79-08 standard.
Lumen maintenance is calculated based on LM-80 compliant measurement.



Product Specifications - Ribbon Go 5 FL RGB / RGBW / DW

Model	FL RGB 10.5W	FL RGBW 13.7W	FL DW 13.7W
Light Source	RGB LED	RGB LED and White LED	White LED
Color Range	RGB	RGBW (White= 4000K)	Dynamic White 2700K-6500K
CRI	/	Ra80, Ra90	Ra80, Ra90
LED Quantity per Meter	60PCS RGB	60PCS RGB + 60PCS White	70PCS Warm White + 70PCS Cool White
Cutting Pitch	100mm	100mm	100mm
Luminous Flux per Meter	360 lm	RGB: 360 lm W 4000K: 367 lm @Ra80	2700K: 936 lm @Ra80 6500K: 977 lm @Ra80
Efficacy	34.2 lm/W	RGB: 34.2 lm/W W 4000K: 114 lm/W @Ra80	2700K: 137 lm/W @Ra80 6500K: 143 lm/W @Ra80
SDCM	/	≤ 3	≤ 3
Beam Angles	120°		
Housing	Silicon Extrusion		
Mounting	Adhesive tape on Ribbon Various mounting channels or mounting clips		
Dimensions (L)	5026mm / 197.91"		
Dimensions (W x H)	12mm x 4.5mm / 0.47" x 0.18"	14mm x 4.5mm / 0.55" x 0.18"	12mm x 4.5mm / 0.47" x 0.18"
Reel Length	5m		
Maximum Daisy Chain	7m	7m	5m
Weight per Meter	78g / 2.75oz	88g / 3.10oz	72g / 2.54oz
Minimum Bend Radius	30mm / 1.18"		
Regulatory Listing & Safety Approval	Electrical Protection Class III		
Operating Temperature	-25°C to +50°C (-13°F to +122°F)		
Storage Temperature	-35°C to +60°C (-31°F to +140°F)		
Environment	Outdoor, IP66		

Electrical Specifications

Input Voltage	24V DC Constant Voltage		
Power Consumption per Meter (Full on)	10.5W	13.7W	13.7W
Lumen Maintenance	L70 50,000hrs @ 25°C		

System Specifications

Power Supply	Power Supply 24V
Control	ON/OFF, DALI, PWM, 0-10V, 1-10V, DMX2PWM Dimmer, Radio Frequency (Dimming is only possible with optional accessories)

Accessories

Mounting Accessories	Optional	The fixtures must be used with U-channel or PL (See "Mounting Accessories Optional Dimensions" on page 10)
----------------------	----------	--

LED CHARACTERISTICS Because LEDs are semiconductor devices, their performances are subject to inherent variability commonly found in semiconductor industry. To improve consistency in performance across the same product, LED manufacturers "sort" LEDs into bins according to different preset parameters, such as forward driving voltage, illumination, etc. Whereas binning is a sorting function, it is not a correction process. Inherent variability in the manufacturing process results always in different binning distributions according to different production lots. Traxon uses automatically binned LEDs on its products, thereby minimizing output variations within the model range.

As with all electronic devices, LED output degrades over time – a term called lumen depreciation. This also explains why it is nearly impossible to expect photometric performances of two LED products with different service life spans to be the same. The rate of LED degrade is a complicate function of many factors such as operating efficiency, duration of continuous operation, and more significantly, environmental conditions (ambient temperature for example). If allowed working under optimal operating temperature range and with good ventilation, LED devices enjoy long service lives over conventional light sources. When using/installing LED devices, care should be taken to ensure that the devices will operate within the operating conditions specified in respective product literature.

Lumen measurement complies with LM-79-08 standard.
Lumen maintenance is calculated based on LM-80 compliant measurement.



Ribbon Go 5 FL

Source Specifications (Flat)

Optics 120°

Light Output - Ribbon Go 5 FL W 70LEDs/m

	Color	Ra80		Ra90	
		Luminous Flux per Meter (lm)	Efficacy (lm/W)	Luminous Flux per Meter (lm)	Efficacy (lm/W)
FL 2W	2700K	266	133	224	112
	3000K	274	137	234	117
	3500K	280	140	236	118
	4000K	286	143	236	118
	5000K	286	143	236	118
	6500K	286	143	232	116
FL 7.1W	2700K	871	122	743	104
	3000K	900	126	778	109
	3500K	921	129	785	110
	4000K	950	133	785	110
	5000K	950	133	785	110
	6500K	928	130	785	110
FL 13.5W	2700K	1756	130	1459	108
	3000K	1783	132	1513	112
	3500K	1824	135	1554	115
	4000K	1878	139	1567	116
	5000K	1878	139	1567	116
	6500K	1837	136	1567	116

Light Output - Ribbon Go 5 FL W 140LEDs/m

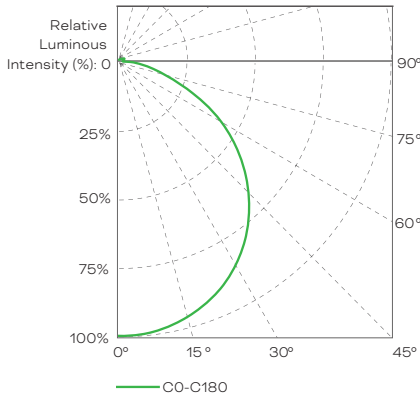
	Color	Ra80		Ra90	
		Luminous Flux per Meter (lm)	Efficacy (lm/W)	Luminous Flux per Meter (lm)	Efficacy (lm/W)
FL 4W	2700K	524	131	444	111
	3000K	544	136	468	117
	3500K	560	140	472	118
	4000K	568	142	472	118
	5000K	568	142	472	118
	6500K	568	142	472	118
FL 6.8W	2700K	870	128	741	109
	3000K	904	133	775	114
	3500K	932	137	782	115
	4000K	938	138	782	115
	5000K	938	138	782	115
	6500K	938	138	782	115
FL 10.5W	2700K	1300	124	1100	105
	3000K	1352	129	1153	110
	3500K	1383	132	1163	111
	4000K	1394	133	1163	111
	5000K	1394	133	1163	111
	6500K	1394	133	1163	111
FL 14.6W	2700K	1737	119	1460	100
	3000K	1796	123	1533	105
	3500K	1840	126	1548	106
	4000K	1869	128	1562	107
	5000K	1869	128	1562	107
	6500K	1869	128	1533	105
FL 20W	2700K	2500	125	2080	104
	3000K	2560	128	2160	108
	3500K	2620	131	2220	111
	4000K	2700	135	2240	112
	5000K	2700	135	2240	112
	6500K	2700	130	2240	112



Light Output - Ribbon Go 5 FL RGB / RGBW / DW

	/		Ra80		Ra90	
	Luminous Flux per Meter (lm)	Efficacy (lm/W)	Luminous Flux per Meter (lm)	Efficacy (lm/W)	Luminous Flux per Meter (lm)	Efficacy (lm/W)
FL RGB 10.5W	360	34.2				
FL RGBW 13.7W			RGB: 360 W 4000K: 367	RGB: 34.2 W 4000K: 114	RGB: 360 W 4000K: 312	RGB: 34.2 W 4000K: 97
FL DW 13.7W			2700K: 936 6500K: 977	2700K: 137 6500K: 143	2700K: 785 6500K: 854	2700K: 115 6500K: 125

Candela Distribution



Illuminance at a Distance

	Center Beam LUX/klm	Beam Width	
0.5m	1380	1.48m / 4.86'	1.6'
1m	345	2.95m / 9.68'	3.3'
1.5m	153	4.43m / 14.53'	4.9'
2.0m	86	5.91m / 19.39'	6.6'
2.5m	55	7.38m / 24.21'	8.2'
3m	38	8.86m / 29.07'	9.8'

For fc divide by 10.7

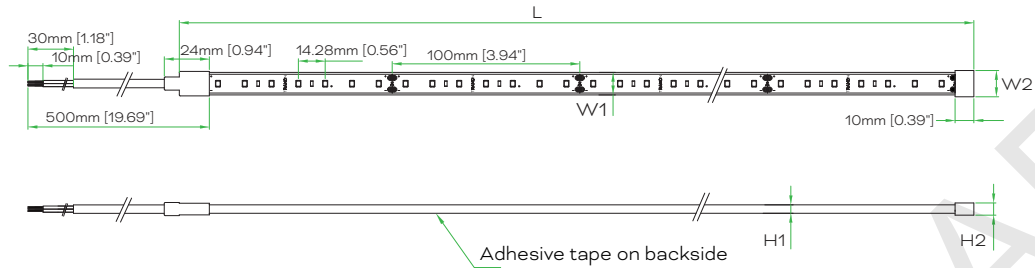
● Horiz.Spread: 111.8°

IES and LDT files are available for download from the Traxon website.



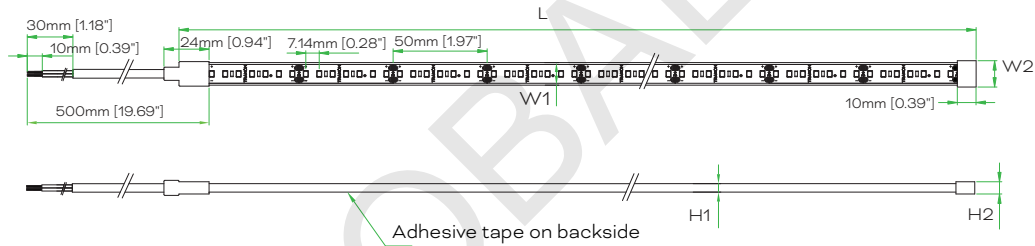
Fixture Dimensions

RIBBON GO 5 FL W 70LEDs/m



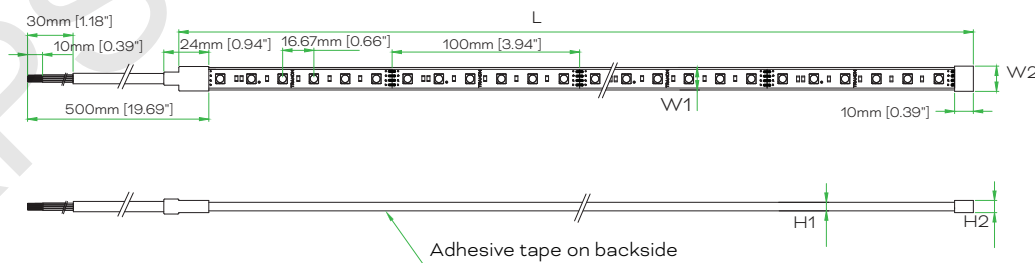
	2W	7.1W	13.5W
L	5026mm [197.91"]	5026mm [197.91"]	5026mm [197.91"]
W1	12mm [0.47"]	12mm [0.47"]	12mm [0.47"]
W2	14mm [0.55"]	14mm [0.55"]	14mm [0.55"]
H1	4.5mm [0.18"]	4.5mm [0.18"]	4.5mm [0.18"]
H2	6.2mm [0.24"]	6.2mm [0.24"]	6.2mm [0.24"]

RIBBON GO 5 FL W 140LEDs/m

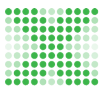


	4W	6.8W	10.5W	14.6W	20W
L	5026mm [197.91"]	5026mm [197.91"]	5026mm [197.91"]	5026mm [197.91"]	5026mm [197.91"]
W1	12mm [0.47"]	12mm [0.47"]	12mm [0.47"]	12mm [0.47"]	14mm [0.55"]
W2	14mm [0.55"]	14mm [0.55"]	14mm [0.55"]	14mm [0.55"]	16mm [0.63"]
H1	4.5mm [0.18"]	4.5mm [0.18"]	4.5mm [0.18"]	4.5mm [0.18"]	4.5mm [0.18"]
H2	6.2mm [0.24"]	6.2mm [0.24"]	6.2mm [0.24"]	6.2mm [0.24"]	6.2mm [0.24"]

RIBBON GO 5 FL RGB

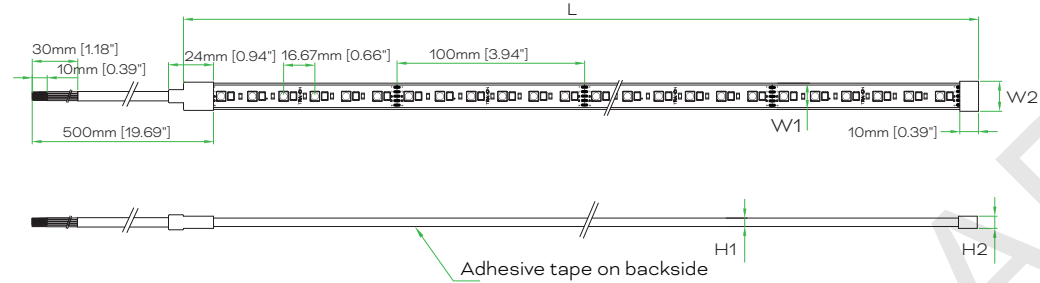


	10.5W
L	5026mm [197.91"]
W1	12mm [0.47"]
W2	14mm [0.55"]
H1	4.5mm [0.18"]
H2	6.2mm [0.24"]



Fixture Dimensions

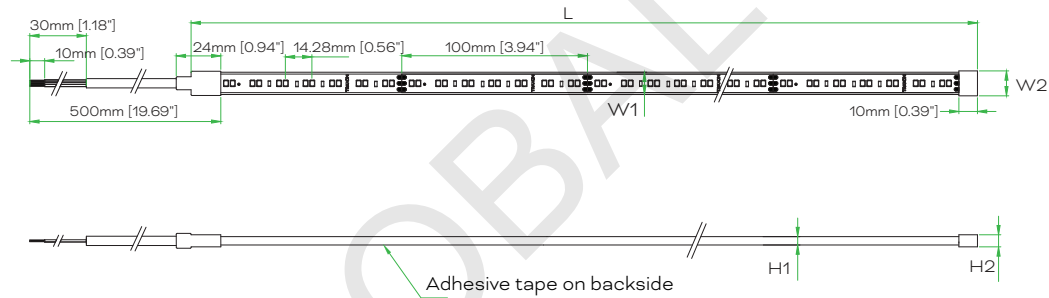
RIBBON GO 5 FL RGBW



13.7W

L	5026mm [197.91"]
W1	14mm [0.55"]
W2	16mm [0.63"]
H1	4.5mm [0.18"]
H2	6.2mm [0.24"]

RIBBON GO 5 FL DW



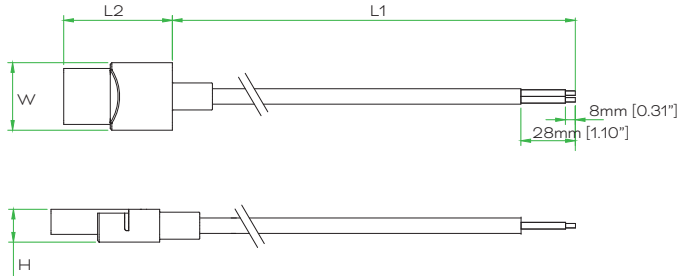
13.7W

L	5026mm [197.91"]
W1	12mm [0.47"]
W2	14mm [0.55"]
H1	4.5mm [0.18"]
H2	6.2mm [0.24"]



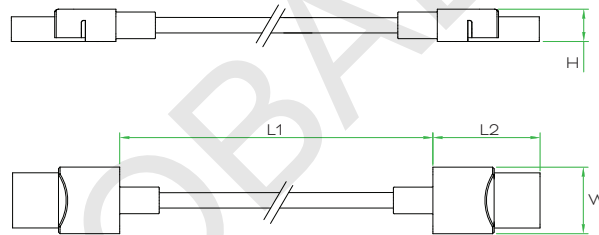
Connection Accessories Dimensions

STARTER CABLE



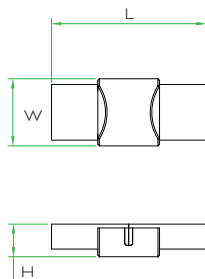
	2PIN 12	2PIN 14	3PIN 12	4PIN 12	5PIN 14
L1	200mm [7.87"]	200mm [7.87"]	200mm [7.87"]	200mm [7.87"]	200mm [7.87"]
L2	28mm [1.1"]	28mm [1.1"]	28mm [1.1"]	28mm [1.1"]	28mm [1.1"]
W	17.5mm [0.69"]	19.5mm [0.77"]	17.5mm [0.69"]	17.5mm [0.69"]	19.5mm [0.77"]
H	8.5mm [0.33"]	8.5mm [0.33"]	8.5mm [0.33"]	8.5mm [0.33"]	8.5mm [0.33"]
Wire	2-core	2-core	3-core	4-core	5-core

INTERCONNECTION CABLE



	2PIN 12	2PIN 14	3PIN 12	4PIN 12	5PIN 14
L1	200mm [7.87"]	200mm [7.87"]	200mm [7.87"]	200mm [7.87"]	200mm [7.87"]
L2	28mm [1.1"]	28mm [1.1"]	28mm [1.1"]	28mm [1.1"]	28mm [1.1"]
W	17.5mm [0.69"]	19.5mm [0.77"]	17.5mm [0.69"]	17.5mm [0.69"]	19.5mm [0.77"]
H	8.5mm [0.33"]	8.5mm [0.33"]	8.5mm [0.33"]	8.5mm [0.33"]	8.5mm [0.33"]
Wire	2-core	2-core	3-core	4-core	5-core

B2B CONNECTOR

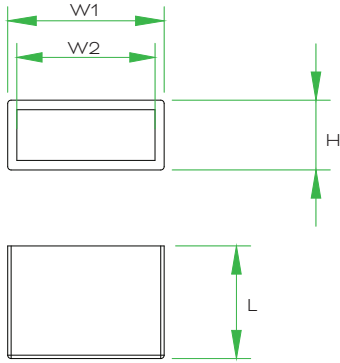


	2PIN 12	2PIN 14	3PIN 12	4PIN 12	5PIN 14
L	40mm [1.57"]	40mm [1.57"]	40mm [1.57"]	40mm [1.57"]	40mm [1.57"]
W	17.5mm [0.69"]	19.5mm [0.77"]	17.5mm [0.69"]	17.5mm [0.69"]	19.5mm [0.77"]
H	8.5mm [0.33"]	8.5mm [0.33"]	8.5mm [0.33"]	8.5mm [0.33"]	8.5mm [0.33"]



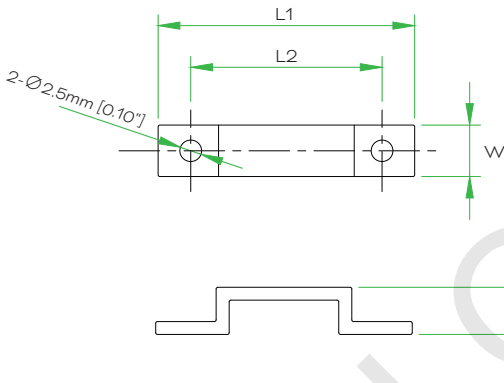
Mounting Accessories Dimensions

FIELD CUT ENDCAP



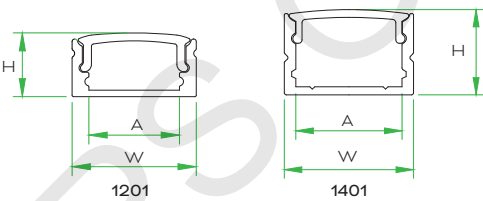
	12	14
L	10mm [0.39"]	10mm [0.39"]
W1	13.7mm [0.54"]	15.7mm [0.62"]
W2	12.1mm [0.48"]	14.1mm [0.56"]
H	6.2mm [0.24"]	6.2mm [0.24"]

MOUNTING CLIP



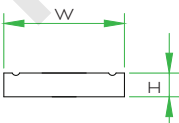
	12	14
L1	29.5mm [1.16"]	31.5mm [1.24"]
L2	22mm [0.87"]	24mm [0.94"]
W	6mm [0.24"]	6mm [0.24"]
H	5.5mm [0.22"]	5.5mm [0.22"]

U-CHANNEL



	1201 980	1401 980
L	980mm [38.58"]	980mm [38.58"]
W	17mm [0.67"]	18.5mm [0.73"]
A	12.4mm [0.49"]	15.2mm [0.6"]
H	8.9mm [0.35"]	12.4mm [0.49"]

PL



	1401 1M
L	1000mm [39.37"]
W	15mm [0.59"]
H	3mm [0.12"]



Fixtures Model Number

RB.	RG.	1	0	NNN	N	N	N	0	5	1	0	00
		Form	Input Voltage	Power / Meter	Ra	LED Color	LEDs / Meter	Beam Angle	Length	IP Grade	Cable Feed	
		1: Flat	0: DC24V	W 70: • 020: 2W/m • 071: 7.1W/m • 135: 13.5W/m	0: RGB without Ra requirement	1: 2700K	W: • 1: 70pcs • 2: 140pcs	0: 120°	5: 5m	1: IP66	0: End Feed	
				W 140: • 040: 4W/m • 068: 6.8W/m • 105: 10.5W/m • 146: 14.6W/m • 200: 20W/m	1: Ra80	2: 3000K	RGB: • 3: 60pcs					
				RGB: • 105: 10.5W/m	2: Ra90	3: 3500K	RGBW: • 0: 120pcs					
				RGBW: • 137: 13.7W/m		4: 4000K	DW: • 2: 140pcs					
				DW • 137: 13.7W/m		5: 5000K						
						7: 6500K						
						8: DW2700K-6500K						
						9: RGB						
						B: RGBW (W=4000K)						

Desired Model Number:

RB.	RG.	1	0					0	5	1	0	00
-----	-----	---	---	--	--	--	--	---	---	---	---	----

Fixtures

Model No.	Description	Item Code
RB.RG.10020111051000	RIBBON GO 5 FL DC 2W 827 70 5M IP66	DL24102084855
RB.RG.10071111051000	RIBBON GO 5 FL DC 7.1W 827 70 5M IP66	DL24102084955
RB.RG.10135111051000	RIBBON GO 5 FL DC 13.5W 827 70 5M IP66	DL24102085055
RB.RG.10020121051000	RIBBON GO 5 FL DC 2W 830 70 5M IP66	DL24102085155
RB.RG.10071121051000	RIBBON GO 5 FL DC 7.1W 830 70 5M IP66	DL24102085255
RB.RG.10135121051000	RIBBON GO 5 FL DC 13.5W 830 70 5M IP66	DL24102085355
RB.RG.10020131051000	RIBBON GO 5 FL DC 2W 835 70 5M IP66	DL24102085455
RB.RG.10071131051000	RIBBON GO 5 FL DC 7.1W 835 70 5M IP66	DL24102085555
RB.RG.10135131051000	RIBBON GO 5 FL DC 13.5W 835 70 5M IP66	DL24102085655
RB.RG.10020141051000	RIBBON GO 5 FL DC 2W 840 70 5M IP66	DL24102085755
RB.RG.10071141051000	RIBBON GO 5 FL DC 7.1W 840 70 5M IP66	DL24102085855
RB.RG.10135141051000	RIBBON GO 5 FL DC 13.5W 840 70 5M IP66	DL24102085955
RB.RG.10020151051000	RIBBON GO 5 FL DC 2W 850 70 5M IP66	DL24102086055
RB.RG.10071151051000	RIBBON GO 5 FL DC 7.1W 850 70 5M IP66	DL24102086155
RB.RG.10135151051000	RIBBON GO 5 FL DC 13.5W 850 70 5M IP66	DL24102086255
RB.RG.10020171051000	RIBBON GO 5 FL DC 2W 865 70 5M IP66	DL24102086355
RB.RG.10071171051000	RIBBON GO 5 FL DC 7.1W 865 70 5M IP66	DL24102086455
RB.RG.10135171051000	RIBBON GO 5 FL DC 13.5W 865 70 5M IP66	DL24102086555



Fixtures

Model No.	Description	Item Code
RB.RG.10020211051000	RIBBON GO 5 FL DC 2W 927 70 5M IP66	DL24102086655
RB.RG.10071211051000	RIBBON GO 5 FL DC 7.1W 927 70 5M IP66	DL24102086755
RB.RG.10135211051000	RIBBON GO 5 FL DC 13.5W 927 70 5M IP66	DL24102086855
RB.RG.10020221051000	RIBBON GO 5 FL DC 2W 930 70 5M IP66	DL24102086955
RB.RG.10071221051000	RIBBON GO 5 FL DC 7.1W 930 70 5M IP66	DL24102087055
RB.RG.10135221051000	RIBBON GO 5 FL DC 13.5W 930 70 5M IP66	DL24102087155
RB.RG.10020231051000	RIBBON GO 5 FL DC 2W 935 70 5M IP66	DL24102087255
RB.RG.10071231051000	RIBBON GO 5 FL DC 7.1W 935 70 5M IP66	DL24102087355
RB.RG.10135231051000	RIBBON GO 5 FL DC 13.5W 935 70 5M IP66	DL24102087455
RB.RG.10020241051000	RIBBON GO 5 FL DC 2W 940 70 5M IP66	DL24102087555
RB.RG.10071241051000	RIBBON GO 5 FL DC 7.1W 940 70 5M IP66	DL24102087655
RB.RG.10135241051000	RIBBON GO 5 FL DC 13.5W 940 70 5M IP66	DL24102087755
RB.RG.10020251051000	RIBBON GO 5 FL DC 2W 950 70 5M IP66	DL24102087855
RB.RG.10071251051000	RIBBON GO 5 FL DC 7.1W 950 70 5M IP66	DL24102087955
RB.RG.10135251051000	RIBBON GO 5 FL DC 13.5W 950 70 5M IP66	DL24102088055
RB.RG.10020271051000	RIBBON GO 5 FL DC 2W 965 70 5M IP66	DL24102088155
RB.RG.10071271051000	RIBBON GO 5 FL DC 7.1W 965 70 5M IP66	DL24102088255
RB.RG.10135271051000	RIBBON GO 5 FL DC 13.5W 965 70 5M IP66	DL24102088355
RB.RG.10040112051000	RIBBON GO 5 FL DC 4W 827 140 5M IP66	DL24102095655
RB.RG.10068112051000	RIBBON GO 5 FL DC 6.8W 827 140 5M IP66	DL24102095755
RB.RG.10105112051000	RIBBON GO 5 FL DC 10.5W 827 140 5M IP66	DL24102095855
RB.RG.10146112051000	RIBBON GO 5 FL DC 14.6W 827 140 5M IP66	DL24102095955
RB.RG.10200112051000	RIBBON GO 5 FL DC 20W 827 140 5M IP66	DL24102096055
RB.RG.10040122051000	RIBBON GO 5 FL DC 4W 830 140 5M IP66	DL24102096155
RB.RG.10068122051000	RIBBON GO 5 FL DC 6.8W 830 140 5M IP66	DL24102096255
RB.RG.10105122051000	RIBBON GO 5 FL DC 10.5W 830 140 5M IP66	DL24102096355
RB.RG.10146122051000	RIBBON GO 5 FL DC 14.6W 830 140 5M IP66	DL24102096455
RB.RG.10200122051000	RIBBON GO 5 FL DC 20W 830 140 5M IP66	DL24102096555
RB.RG.10040132051000	RIBBON GO 5 FL DC 4W 835 140 5M IP66	DL24102096655
RB.RG.10068132051000	RIBBON GO 5 FL DC 6.8W 835 140 5M IP66	DL24102096755
RB.RG.10105132051000	RIBBON GO 5 FL DC 10.5W 835 140 5M IP66	DL24102096855
RB.RG.10146132051000	RIBBON GO 5 FL DC 14.6W 835 140 5M IP66	DL24102096955
RB.RG.10200132051000	RIBBON GO 5 FL DC 20W 835 140 5M IP66	DL24102097055
RB.RG.10040142051000	RIBBON GO 5 FL DC 4W 840 140 5M IP66	DL24102097155
RB.RG.10068142051000	RIBBON GO 5 FL DC 6.8W 840 140 5M IP66	DL24102097255
RB.RG.10105142051000	RIBBON GO 5 FL DC 10.5W 840 140 5M IP66	DL24102097355
RB.RG.10146142051000	RIBBON GO 5 FL DC 14.6W 840 140 5M IP66	DL24102097455
RB.RG.10200142051000	RIBBON GO 5 FL DC 20W 840 140 5M IP66	DL24102097555
RB.RG.10040152051000	RIBBON GO 5 FL DC 4W 850 140 5M IP66	DL24102097655
RB.RG.10068152051000	RIBBON GO 5 FL DC 6.8W 850 140 5M IP66	DL24102097755
RB.RG.10105152051000	RIBBON GO 5 FL DC 10.5W 850 140 5M IP66	DL24102097855
RB.RG.10146152051000	RIBBON GO 5 FL DC 14.6W 850 140 5M IP66	DL24102097955
RB.RG.10200152051000	RIBBON GO 5 FL DC 20W 850 140 5M IP66	DL24102098055



Fixtures

Model No.	Description	Item Code
RB.RG.10040172051000	RIBBON GO 5 FL DC 4W 865 140 5M IP66	DL24102098155
RB.RG.10068172051000	RIBBON GO 5 FL DC 6.8W 865 140 5M IP66	DL24102098255
RB.RG.10105172051000	RIBBON GO 5 FL DC 10.5W 865 140 5M IP66	DL24102098355
RB.RG.10146172051000	RIBBON GO 5 FL DC 14.6W 865 140 5M IP66	DL24102098455
RB.RG.10200172051000	RIBBON GO 5 FL DC 20W 865 140 5M IP66	DL24102098555
RB.RG.10040212051000	RIBBON GO 5 FL DC 4W 927 140 5M IP66	DL24102098655
RB.RG.10068212051000	RIBBON GO 5 FL DC 6.8W 927 140 5M IP66	DL24102098755
RB.RG.10105212051000	RIBBON GO 5 FL DC 10.5W 927 140 5M IP66	DL24102098855
RB.RG.10146212051000	RIBBON GO 5 FL DC 14.6W 927 140 5M IP66	DL24102098955
RB.RG.10200212051000	RIBBON GO 5 FL DC 20W 927 140 5M IP66	DL24102099055
RB.RG.10040222051000	RIBBON GO 5 FL DC 4W 930 140 5M IP66	DL24102099155
RB.RG.10068222051000	RIBBON GO 5 FL DC 6.8W 930 140 5M IP66	DL24102099255
RB.RG.10105222051000	RIBBON GO 5 FL DC 10.5W 930 140 5M IP66	DL24102099355
RB.RG.10146222051000	RIBBON GO 5 FL DC 14.6W 930 140 5M IP66	DL24102099455
RB.RG.10200222051000	RIBBON GO 5 FL DC 20W 930 140 5M IP66	DL24102099555
RB.RG.10040232051000	RIBBON GO 5 FL DC 4W 935 140 5M IP66	DL24102099655
RB.RG.10068232051000	RIBBON GO 5 FL DC 6.8W 935 140 5M IP66	DL24102099755
RB.RG.10105232051000	RIBBON GO 5 FL DC 10.5W 935 140 5M IP66	DL24102099855
RB.RG.10146232051000	RIBBON GO 5 FL DC 14.6W 935 140 5M IP66	DL24102099955
RB.RG.10200232051000	RIBBON GO 5 FL DC 20W 935 140 5M IP66	DL24102100055
RB.RG.10040242051000	RIBBON GO 5 FL DC 4W 940 140 5M IP66	DL24102100155
RB.RG.10068242051000	RIBBON GO 5 FL DC 6.8W 940 140 5M IP66	DL24102100255
RB.RG.10105242051000	RIBBON GO 5 FL DC 10.5W 940 140 5M IP66	DL24102100355
RB.RG.10146242051000	RIBBON GO 5 FL DC 14.6W 940 140 5M IP66	DL24102100455
RB.RG.10200242051000	RIBBON GO 5 FL DC 20W 940 140 5M IP66	DL24102100555
RB.RG.10040252051000	RIBBON GO 5 FL DC 4W 950 140 5M IP66	DL24102100655
RB.RG.10068252051000	RIBBON GO 5 FL DC 6.8W 950 140 5M IP66	DL24102100755
RB.RG.10105252051000	RIBBON GO 5 FL DC 10.5W 950 140 5M IP66	DL24102100855
RB.RG.10146252051000	RIBBON GO 5 FL DC 14.6W 950 140 5M IP66	DL24102100955
RB.RG.10200252051000	RIBBON GO 5 FL DC 20W 950 140 5M IP66	DL24102101055
RB.RG.10040272051000	RIBBON GO 5 FL DC 4W 965 140 5M IP66	DL24102101155
RB.RG.10068272051000	RIBBON GO 5 FL DC 6.8W 965 140 5M IP66	DL24102101255
RB.RG.10105272051000	RIBBON GO 5 FL DC 10.5W 965 140 5M IP66	DL24102101355
RB.RG.10146272051000	RIBBON GO 5 FL DC 14.6W 965 140 5M IP66	DL24102101455
RB.RG.10200272051000	RIBBON GO 5 FL DC 20W 965 140 5M IP66	DL24102101555
RB.RG.10105093051000	RIBBON GO 5 FL DC 10.5W RGB 60 5M IP66	DL24102101755
RB.RG.101371B0051000	RIBBON GO 5 FL DC 13.7W RGBW840 120 5M IP66	DL24102102055
RB.RG.101372B0051000	RIBBON GO 5 FL DC 13.7W RGBW940 120 5M IP66	DL24102102155
RB.RG.10137182051000	RIBBON GO 5 FL DC 13.7W DW82765 140 5M IP66	DL24102102455
RB.RG.10137282051000	RIBBON GO 5 FL DC 13.7W DW92765 140 5M IP66	DL24102102555

TX Cutting Tools

Description	Item Code	Fixtures Width
RIBBON GO 5 CUTTING TOOL	DA24102105655	
RIBBON GO 5 SEALING GLUE 100ML	DA24102105755	
RIBBON GO 5 FL FIELD CUT ENDCAP 12 20PC	DA24102105855	12mm
RIBBON GO 5 FL FIELD CUT ENDCAP 14 20PC	DA24102105955	14mm



Ribbon Go 5 FL

Ordering

TX Connect

Description	Item Code	Fixtures Width
STARTER CABLE 5 FL 2PIN 12 200MM W	DA24102104155	12mm
INTERCONNECTION CABLE 5 FL 2PIN 12 200MM W	DA24102104255	12mm
B2B CONNECTOR 5 FL 2PIN 12 10PC W	DA24102104355	12mm
STARTER CABLE 5 FL 2PIN 14 200MM W	DA24102105355	14mm
INTERCONNECTION CABLE 5 FL 2PIN 14 200MM W	DA24102105455	14mm
B2B CONNECTOR 5 FL 2PIN 14 10PC W	DA24102105555	14mm
STARTER CABLE 5 FL 4PIN 12 200MM RGB	DA24102104755	12mm
INTERCONNECTION CABLE 5 FL 4PIN 12 200MM RGB	DA24102104855	12mm
B2B CONNECTOR 5 FL 4PIN 12 10PC RGB	DA24102104955	12mm
STARTER CABLE 5 FL 5PIN 14 200MM RGBW	DA24102105055	14mm
INTERCONNECTION CABLE 5 FL 5PIN 14 200MM RGBW	DA24102105155	14mm
B2B CONNECTOR 5 FL 5PIN 14 10PC RGBW	DA24102105255	14mm
STARTER CABLE 5 FL 3PIN 12 200MM DW	DA24102104455	12mm
INTERCONNECTION CABLE 5 FL 3PIN 12 200MM DW	DA24102104555	12mm
B2B CONNECTOR 5 FL 3PIN 12 10PC DW	DA24102104655	12mm

TX Mounting

Description	Item Code	Fixtures Width	Remark
RIBBON GO 5 FL MOUNTING CLIP 12 10PC	DA24102106055	12mm	
RIBBON GO 5 FL MOUNTING CLIP 14 10PC	DA24102106155	14mm	
RIBBON GO 5 U-CHANNEL 1201 980 INDOOR	DA24102106255	12mm	For indoor use only
RIBBON GO 5 U-CHANNEL 1401 980 INDOOR	DA24102106755	12/14mm	For indoor use only
RIBBON GO 5 PL 1401 1M	DA24102106855	12/14mm	

TX Power Supply & Control

Description	Item Code
POWER SUPPLY 5 200W 24V ONOFF OUTDOOR	DA24102106955
POWER SUPPLY 5 120W 24V ONOFF INDOOR	DA24102107055
POWER SUPPLY 5 150W 24V 0-10 PWM INDOOR	DA24102107155
POWER SUPPLY 5 150W 24V 0-10 PWM DW INDOOR	DA24102107255
POWER SUPPLY 5 150W 24V DALI INDOOR	DA24102107355
POWER SUPPLY 5 150W 24V DALI DW INDOOR	DA24102107455
POWER SUPPLY 5 150W 24V DALI RGBW INDOOR	DA24102107555
RF REMOTE 5	DA24102107655
RF DIMMER 5 2.4G INDOOR	DA24102107755
RF REMOTE 5 DW	DA24102107855
RF DIMMER 5 2.4G DW INDOOR	DA24102107955
RF DIMMER 5 2.4G RGB INDOOR	DA24102108055
RF DIMMER 5 2.4G RGBW INDOOR	DA24102108155
RF REMOTE 5 RGBW	DA24102108255
DMX2PWM DIMMER 4CH	AM467260055
SYMPL ESSENTIAL2 NODE	AM466930031

